

4600-RMS Remote Monitoring System

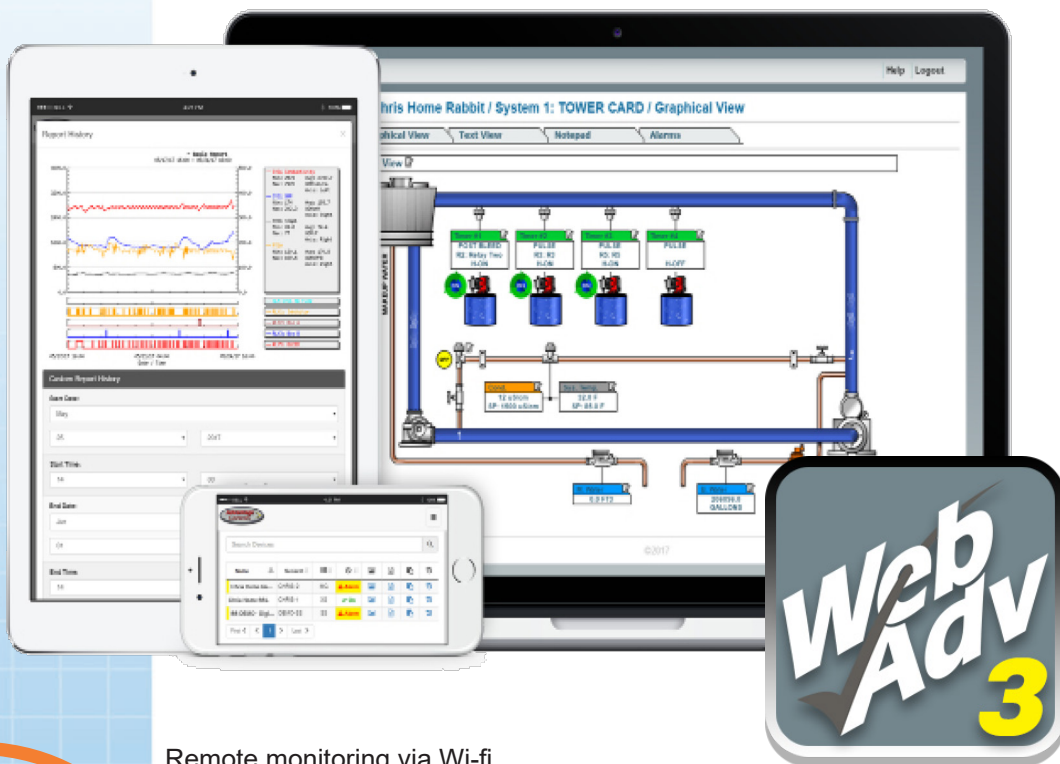


Remote monitoring, control and reporting of field instruments with WebAdvantage

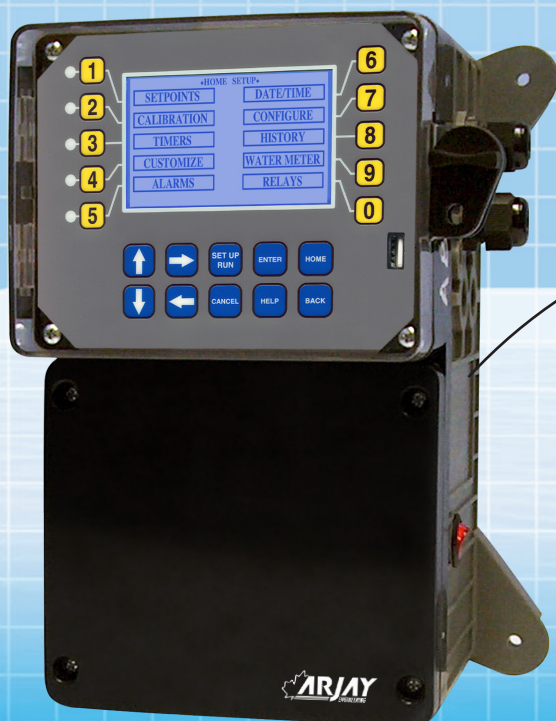
The Arjay Remote Monitoring System offers easy-to-use general purpose I/O and analog signal monitoring with the WebAdvantage remote control, monitoring and reporting system.

Units can be configured to monitor and control a wide range of digital and analog inputs. Advanced customization and relay logic allow units to meet your specific needs.

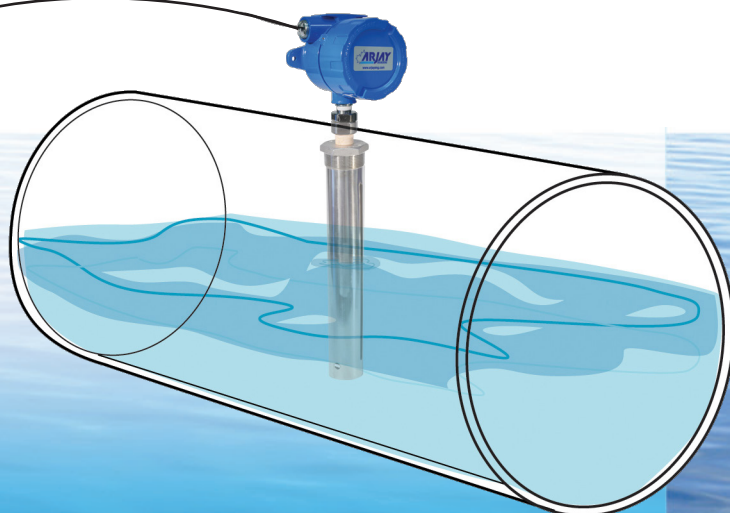
Remote Monitor units are equipped with WebAdvantage for web-based access of settings, readings, email alarming and unique custom reporting.



Remote monitoring via Wi-fi, ethernet or cellular interface



Multiple analog, digital or Modbus inputs from your own instruments



4600-RMS

Features and Benefits

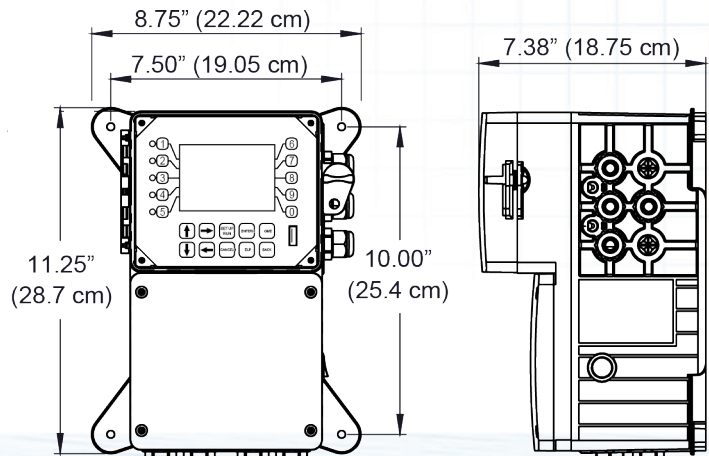
- Customizable LCD display
- On board history graphs
- Easy-to-use menu
- Wi-fi, ethernet or cellular
- BACnet or Modbus
- 5 or 10 digital inputs
- 5 assignable relay outputs
- Up to 8 mA inputs
- Up to 4 mA outputs
- Customizable notepad
- USB history access

Notes

- Base units have 5 digital inputs, 5 powered relays with WebAdvantage comm card
- Communications card can be connected to internet and WebAdvantage via CAT5 or Wi-fi with DHCP or static IP
- External cellular routers and data plans are available
- All units include 10 customizable notepad fields for manual reading test entry. These entries can generate alarms and are stored historically for graphing and reporting

Technical Specifications

Electrical input	95-240 VAC, 50/60 Hz
Relay outputs	Equal to input voltage (95-240 VAC) when configured as a powered relay and fused at 2.5A per relay. If configured as a dry contact the pass through current is limited to 2.5A at 28 VDC
Display	240 x 128 graphic LCD
Digital inputs (5 or 10)	From open collector/open drain output or dry contact. Inputs have 10K Ω pullup to 3.3 VDC
mA inputs	Optical isolation, 250 Ω / 5 VDC @ 20 mA. Loop voltage to not exceed 30 VDC
mA outputs	With non-isolated 12 VDC power from unit max load = 400 Ω . With isolated external 24 VDC power supply, max load = 800 Ω
Enclosure	Heavy duty corrosion and weather resistant high impact ABS with padlock able gasketed Lexan cover
Environment	
Ambient temperature	0° to 125°F (-17 to 52°C)
Relative humidity	0 to 100%
Shipping weight	approximately 8 lbs (3.62 kg)



Arjay Engineering

2851 Brighton Road Oakville, Ontario Canada L6H 6C9

<http://www.arjayeng.com>

telephone: +1 905-829-2418

N. America toll free: 1-800-387-9487

fax: +1 905-829-4701

4600-RMS-21a