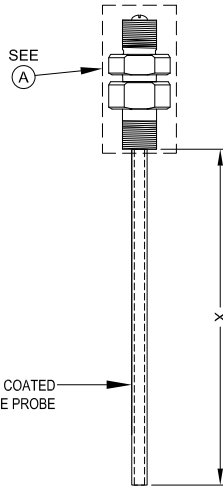
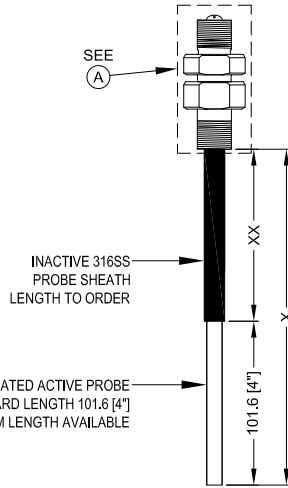


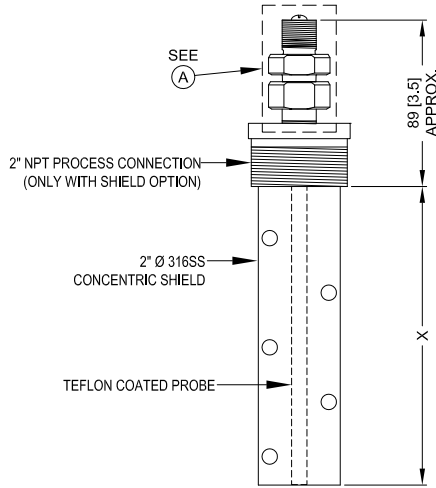
TYPICAL PART NUMBER:
PCA-Xmm-Z
Where:
X = Overall probe length



TYPICAL PART NUMBER:
PCA-Xmm-D(XXmm)-Z
Where:
X = Overall probe length
XX = Inactive probe sheath length



TYPICAL PART NUMBER:
PKA-Xmm-Z
Where:
X = Overall probe length



TYPICAL PART NUMBER:
PMD-Xmm-J-Z
Where:
X = Overall probe length
J = 316SS Weight (2.5lb)

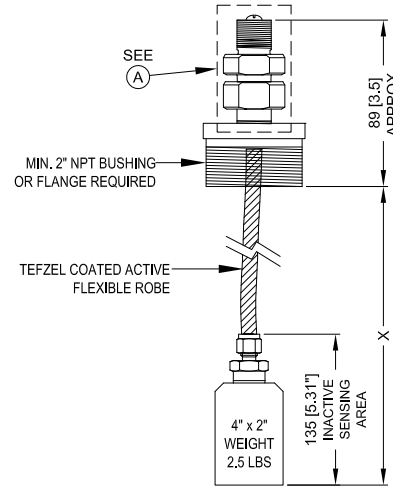


TABLE 1: mA Outputs

mA Outputs	Models Available
4/20mA OUTPUT Where: 4mA = Normal AND 20mA = Alarm BASED ON ALARM 1	2882-OWS, 2882-L.S, 2882-FCS, 2882-IFA
4-20mA OUTPUT or 0-20mA OUTPUT	2880-OWI, 2882-OWI, 2880-LT, 2882-LT, 2880-FCM, 2882-FCM 2880-CAP, 2882-CAP

*2880 Available for these models only.

2880 & 2882 SERIES WORK SHEET	
CODE	Base Unit
28	Arjay 2880 Series Capacitance Level Transmitter
ECODE	Probe Input and Controller Mounting Type
80	Non-Isolated 4-20mA, Probe Mount
82	Non-Isolated 4-20mA With Relays, Probe Mount
CODE	Type of Application (Model)
LT	Level Transmitter with proportional mA Output
LS	Level Switch with Latched mA Output
OWS	Oil/Water Separator (Sump) Alarm
OWI	Oil/Water Interface
CAP	Capacitance Monitor
FCM	Form Control Monitor
FCS	Form Control Switch
IFA	Interface Alarm
CODE	Power Input
1	100-240VAC, 50/60Hz
2	N/A
3	12VDC
4	24VDC
CODE	Unit Enclosure
4	Ordinary Location without window, North America Certificate
6	Explosion Proof without window, North America Certificate
7	Explosion Proof without window, ATEX, IECEx

GENERAL NOTES:

- DIMENSIONS ARE IN mm [inches].
- TOLERANCE +1mm (0.04 inches).
- PROBE HOUSING (STANDARD) AS SHOWN ABOVE:
 - MATERIAL: TYPE 4X DIE-CAST ALUMINIUM JUNCTION, PAINTED RAL 5015 SKY BLUE.
 - MODEL: LIMATHERM "XD-IH".
 - OVERALL OUTSIDE DIMENSIONS: 145 X 126 X 178 (H) (5.71 X 4.96 X 7.01(H)).
- PROBE HOUSING FOR NORTH AMERICA ONLY (EXPLOSION PROOF):
 - MATERIAL: TYPE 4X DIE-CAST ALUMINIUM JUNCTION, SILVER POWDER EPOXY PAINT.
 - MODEL: HUBBELL/KILLARK "HK" SERIES.
 - OVERALL OUTSIDE DIMENSIONS: 156 X 133 X 151(H) (6.125 X 5.234 X 5.938(H)).
- POWER INPUT:
 - VOLTAGE AS PER ORDER
 - 12VDC or 24VDC or 100-240VAC, 50/60Hz.
 - TERMINALS MARKED (-) (+) ARE FOR DC POWERED UNITS.
- TB6 IS DISCONNECTED DURING SHIPMENT FOR STATIC REASONS. MUST RE-CONNECT DURING INSTALLATION. TB6 HAS TWO "+" CONNECTIONS. EITHER IS ACCEPTABLE.

CERTIFICATION:

PROCESS TEMPERATURE FOR THE STANDARD & HEAVY DUTY PROBES ARE -60°C to +200°C AND FOR FLEXIBLE PROBE IS -60°C to +100°C. IT IS END-USER'S RESPONSIBILITY TO ENSURE THAT AMBIENT TEMPERATURE AROUND THE CAPACITANCE CONTROLLER AND ARJAY PROBE HEAD DOES NOT EXCEED THE PERMITTED AMBIENT OF 55°C.

ORDINARY LOCATION RATING:

- UL FILE NUMBER: E343390
- UL / IEC 61010-1, 2ND EDITION, 2008/10/28
- CAN/CSA-22.2 NO. 61010-1, 2ND EDITION, 2008/10/01
- CE: UL / IEC 61010-1; IEC / EN 61000-4; ISO 9001:2008

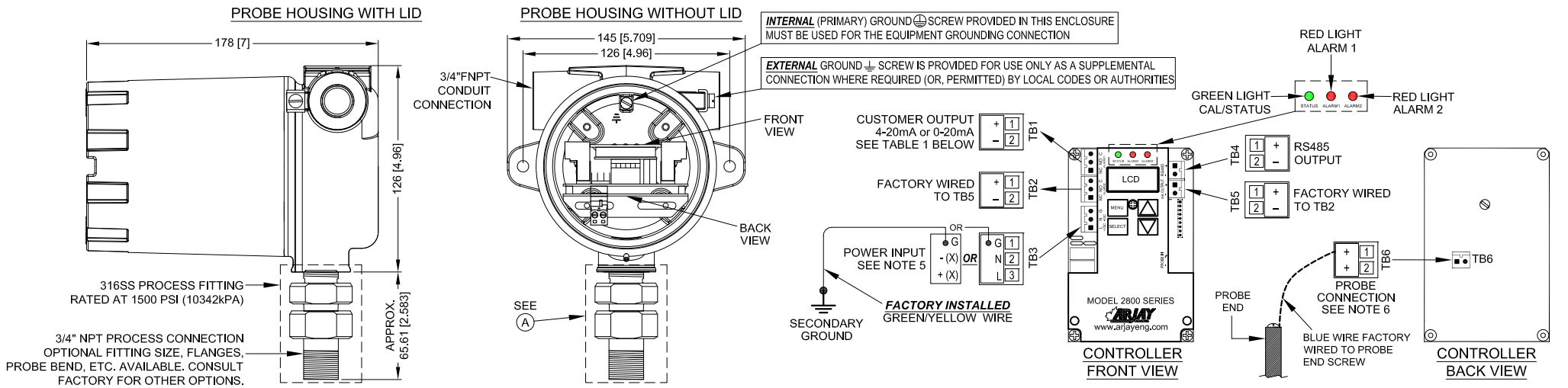
HAZARDOUS LOCATION RATING FOR NORTH AMERICA:

- Ex db IIC T5 Gb
- Class I, Zone 1, AEx db IIC T5 Gb

HAZARDOUS LOCATION RATING FOR INTERNATIONAL:

- II 2G Exd T5 Gb
- Sira 17ATEX2261X
- IECEx CSA 17.0019X

REV	DATE	DESCRIPTION	CHKD	APPD
REVISIONS				
ARJAY ENGINEERING LIMITED			PROJECT	
DWG. STATUS	BY	DATE	TITLE	
DRAWN	F.H.	02/01/17	2880/2882 SERIES TRANSMITTER	
CHECKED			DIMENSIONAL AND ELECTRICAL DRAWING	
APPROVED				
SCALE	REF. DWGS.	DWG. NO.	SHT.	
N.T.S.		20170820	1	
			REV.	



TYPICAL PART NUMBER:
PCA-Xmm-Z
Where:
X = Overall probe length

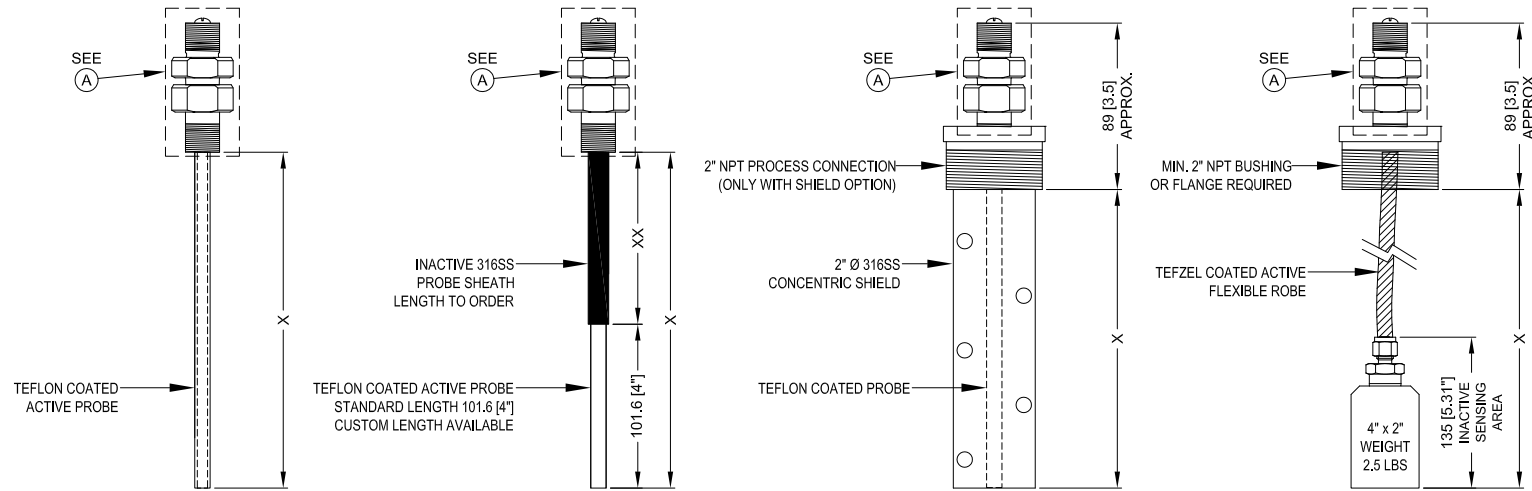
TYPICAL PART NUMBER:
PCA-Xmm-D(XXmm)-Z
Where:
X = Overall probe length
XX = Inactive probe sheath length

TYPICAL PART NUMBER:
PKA-Xmm-Z
Where:
X = Overall probe length

TYPICAL PART NUMBER:
PMD-Xmm-J-Z
Where:
X = Overall probe length
J = 316SS Weight (2.5lb)

TABLE 1: mA Outputs

mA Outputs	Models Available
4-20mA OUTPUT or 0-20mA OUTPUT	2881-LT, 2881-OWI, 2881-CAP, 2881-FCM



2881 SERIES WORK SHEET	
CODE 28	Base Unit Arjay 2880 Series Capacitance Level Transmitter
CODE 81	Probe Input and Controller Mounting Type Isolated 4-20mA, Probe Mount
CODE	Type of Application (Model)
LT	Level Transmitter with proportional mA Output
OWI	Oil/Water Interface
CAP	Capacitance Monitor
FCM	Form Control Monitor
CODE	Power Input
1	100-240VAC, 50/60Hz
2	N/A
3	12VDC
4	24VDC
CODE	Unit Enclosure
4	Ordinary Location without window, North America Certificate
6	Explosion Proof without window, North America Certificate
7	Explosion Proof without window, ATEX, IECEx
28	aaa
bbb	c
d	

GENERAL NOTES:

- DIMENSIONS ARE IN mm [inches].
- TOLERANCE +1mm (0.04 inches).
- PROBE HOUSING (STANDARD) AS SHOWN ABOVE:
 - MATERIAL: TYPE 4X DIE-CAST ALUMINIUM JUNCTION, PAINTED RAL 5015 SKY BLUE.
 - MODEL: LIMATHERM "XD-IH".
 - OVERALL OUTSIDE DIMENSIONS: 145 X 126 X 178 (H) (5.71 X 4.96 X 7.01(H)).
- PROBE HOUSING FOR NORTH AMERICA ONLY (EXPLOSION PROOF):
 - MATERIAL: TYPE 4X DIE-CAST ALUMINIUM JUNCTION, SILVER POWDER EPOXY PAINT.
 - MODEL: HUBBELL/KILLARK "HK" SERIES.
 - OVERALL OUTSIDE DIMENSIONS: 156 X 133 X 151(H) (6.125 X 5.234 X 5.938(H)).
- POWER INPUT:
 - VOLTAGE AS PER ORDER
 - 12VDC or 24VDC or 100-240VAC, 50/60Hz.
 - TERMINALS MARKED (-) (+) ARE FOR DC POWERED UNITS.
- TB6 IS DISCONNECTED DURING SHIPMENT FOR STATIC REASONS. MUST RE-CONNECT DURING INSTALLATION. TB6 HAS TWO "+" CONNECTIONS. EITHER IS ACCEPTABLE.

CERTIFICATION:

PROCESS TEMPERATURE FOR THE STANDARD & HEAVY DUTY PROBES ARE -60°C to +200°C AND FOR FLEXIBLE PROBE IS -60°C to +100°C. IT IS END-USER'S RESPONSIBILITY TO ENSURE THAT AMBIENT TEMPERATURE AROUND THE CAPACITANCE CONTROLLER AND ARJAY PROBE HEAD DOES NOT EXCEED THE PERMITTED AMBIENT OF 55°C.

ORDINARY LOCATION RATING:

- UL FILE NUMBER: E343390
- UL / IEC 61010-1, 2ND EDITION, 2008/10/28
- CAN/CSA-22.2 NO. 61010-1, 2ND EDITION, 2008/10/01
- CE: UL / IEC 61010-1; IEC / EN 61000-4; ISO 9001:2008

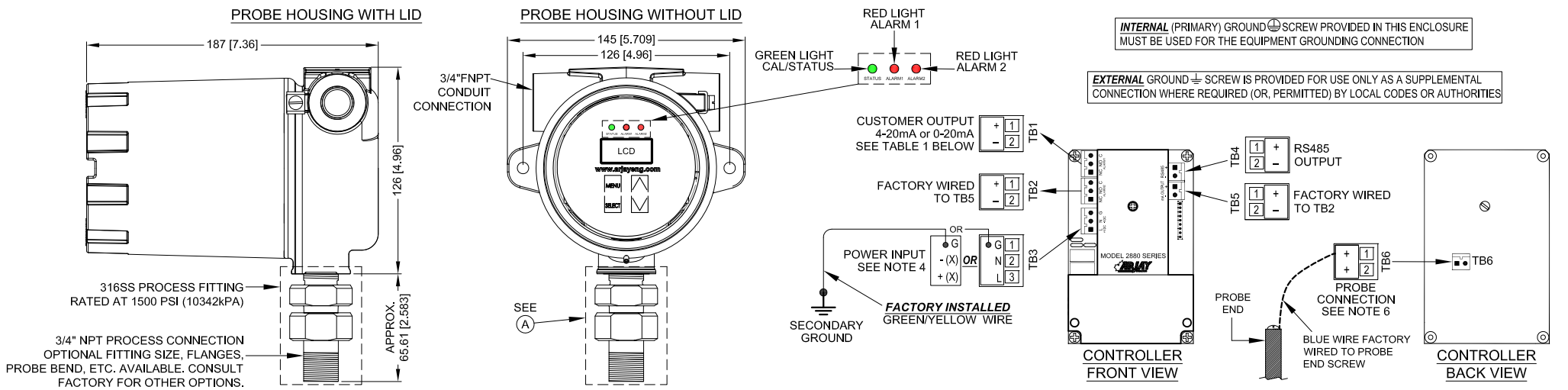
HAZARDOUS LOCATION RATING FOR NORTH AMERICA:

- Ex db IIC T5 Gb
- Class I, Zone 1, AEx db IIC T5 Gb

HAZARDOUS LOCATION RATING FOR INTERNATIONAL:

- II 2G Exd T5 Gb
- Sira 17ATEX2261X
- IECEx CSA 17.0019X

REV	DATE	DESCRIPTION	CHKD	APPD
REVISIONS				
ARJAY ENGINEERING LIMITED			PROJECT	
DWG. STATUS	BY	DATE	TITLE	
DRAWN	F.H.	02/01/17	2881 SERIES TRANSMITTER	
CHECKED			DIMENSIONAL AND ELECTRICAL DRAWING	
APPROVED				
SCALE	REF. DWGS.	DWG. NO.	SHT.	REV.
N.T.S.		20170821	1	0



TYPICAL PART NUMBER:
 PCA-Xmm-Z
 Where:
 X = Overall probe length

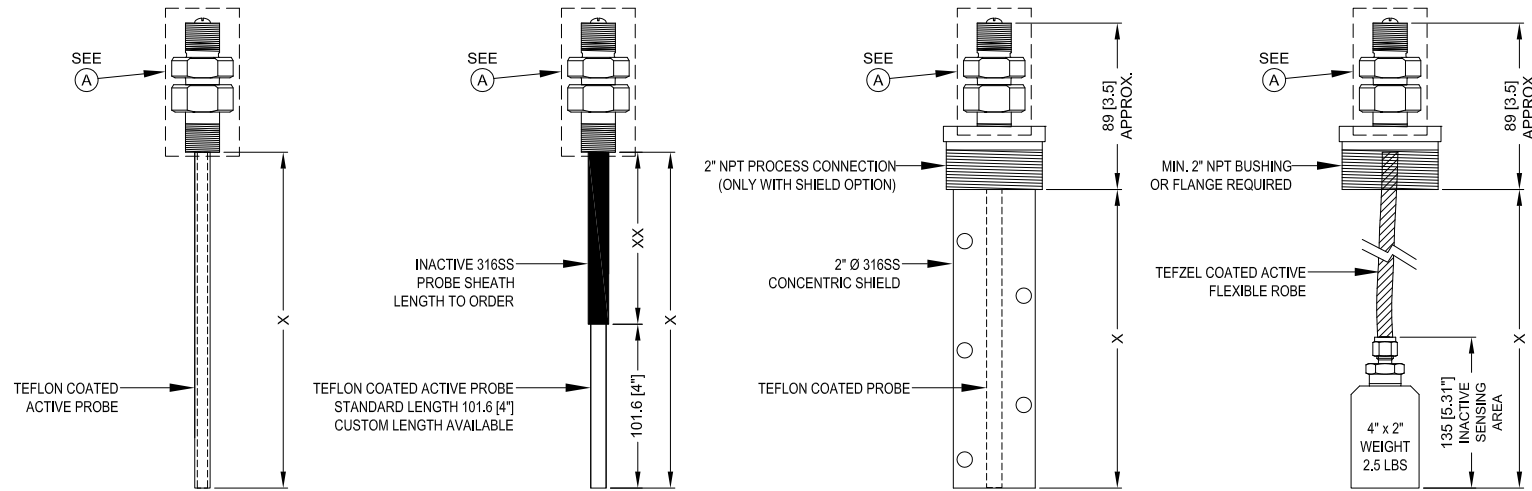
TYPICAL PART NUMBER:
 PCA-Xmm-D(XXmm)-Z
 Where:
 X = Overall probe length
 XX = Inactive probe sheath length

TYPICAL PART NUMBER:
 PKA-Xmm-Z
 Where:
 X = Overall probe length

TYPICAL PART NUMBER:
 PMD-Xmm-J-Z
 Where:
 X = Overall probe length
 J = 316SS Weight (2.5lb)

TABLE 1: mA Outputs

mA Outputs	Models Available
4-20mA OUTPUT or 0-20mA OUTPUT	2881W-LT, 2881W-OWI, 2881W-CAP, 2881W-FCM



2881 SERIES WORK SHEET	
CODE	Base Unit
28	Arjay 2880 Series Capacitance Level Transmitter
CODE	Probe Input and Controller Mounting Type
81W	Isolated 4-20mA; Probe Mount With Window
CODE	Type of Application (Window)
LT	Level Transmitter with proportional mA Output
OWI	Oil/Water Interface
CAP	Capacitance Monitor
FCM	Form Control Monitor
CODE	Power Input
1	100-240VAC, 50/60Hz
2	N/A
3	12VDC
4	24VDC
CODE	Unit Enclosure
5	Ordinary Location with window, North America Certificate
8	Explosion Proof with window, North America, ATEX, IECEx

GENERAL NOTES:

- DIMENSIONS ARE IN mm [inches].
- TOLERANCE +1mm (0.04 inches).
- PROBE HOUSING (STANDARD) AS SHOWN ABOVE:
 - MATERIAL: TYPE 4X DIE-CAST ALUMINIUM JUNCTION, PAINTED RAL 5015 SKY BLUE.
 - MODEL: LIMATHERM "XD-IHwin" WITH WINDOW.
 - OVERALL OUTSIDE DIMENSIONS: 145 X 126 X 187 (H) (5.71 X 4.96 X 7.36(H)).
- POWER INPUT:
 - VOLTAGE AS PER ORDER
 - 12VDC or 24VDC or 100-240VAC, 50/60Hz.
 - TERMINALS MARKED (-) (+) ARE FOR DC POWERED UNITS.
- TB6 IS DISCONNECTED DURING SHIPMENT FOR STATIC REASONS. MUST RE-CONNECT DURING INSTALLATION. TB6 HAS TWO "+" CONNECTIONS. EITHER IS ACCEPTABLE.

CERTIFICATION:

PROCESS TEMPERATURE FOR THE STANDARD & HEAVY DUTY PROBES ARE -60°C to +200°C AND FOR FLEXIBLE PROBE IS -60°C to +100°C. IT IS END-USER'S RESPONSIBILITY TO ENSURE THAT AMBIENT TEMPERATURE AROUND THE CAPACITANCE CONTROLLER AND ARJAY PROBE HEAD DOES NOT EXCEED THE PERMITTED AMBIENT OF 55°C.

ORDINARY LOCATION RATING:

- UL FILE NUMBER: E343390
- UL / IEC 61010-1, 2ND EDITION, 2008/10/28
- CAN/CSA-22.2 NO. 61010-1, 2ND EDITION, 2008/10/01
- CE: UL / IEC 61010-1; IEC / EN 61000-4; ISO 9001:2008

HAZARDOUS LOCATION RATING FOR NORTH AMERICA:

- Ex db IIC T5 Gb
- Class I, Zone 1, AEx db IIC T5 Gb

HAZARDOUS LOCATION RATING FOR INTERNATIONAL:

- II 2G Exd T5 Gb
- Sira 17ATEX2261X
- IECEx CSA 17.0019X

REV	DATE	DESCRIPTION	CHKD	APPD
REVISIONS				
ARJAY ENGINEERING LIMITED			PROJECT	
DWG. STATUS	BY	DATE	TITLE	
DRAWN	F.H.	23/08/17	2881W SERIES TRANSMITTER	
CHECKED			DIMENSIONAL AND ELECTRICAL DRAWING	
APPROVED				
SCALE	REF. DWGS.	DWG. NO.	SHT. REV.	
N.T.S.		20170831	1 0	