

GENERAL NOTES:

- DIMENSIONS ARE IN mm [inches].
- TOLERANCE +1mm (0.04 inches).
- CONTROLLER ENCLOSURE (STANDARD):**
 - MATERIAL: NEMA 4-12 (IP66) STEEL WITH POLYESTER POWDER BLUE (RAL5015) PAINT.
 - MODEL: EXM 5412 ESCH080804.
 - OUTSIDE DIMENSIONS: 203.2 X 203.2 X 101.6D (8 X 8 X 4D).
 - MOUNTING DIMENSIONS: 222.25 X 152.4 (8.75 X 6).
- CONTROLLER ENCLOSURE (OPTIONAL):**
 - MATERIAL: TYPE 4X POLYCARBONATE OPAQUE LIGHT GRAY WITH A GLOSS FINISH.
 - MODEL: INTEGRA ENCLOSURE H8084HLL.
 - OUTSIDE DIMENSIONS: 214 X 214 X 139D (8.44 X 8.44 X 5.47D).
 - MOUNTING DIMENSIONS: 241 X 133 (9.5 X 5.25).
- POWER INPUT:**
 - VOLTAGE AS PER ORDER
 - 12VDC or 24VDC or 100-240VAC, 50/60Hz.
 - TERMINALS MARKED (-) (+) ARE FOR DC POWERED UNITS.

CERTIFICATION - CONTROLLER:

ORDINARY LOCATION RATING:

- UL FILE NUMBER: E343390
- UL / IEC 61010-1, 2ND EDITION, 2008/10/28
- CAN/CSA-22.2 NO. 61010-1, 2ND EDITION, 2008/10/01
- CE: UL / IEC 61010-1; IEC / EN 61000-4; ISO 9001:2008

CERTIFICATION - SENSOR PROBE:

PROCESS TEMPERATURE FOR THE STANDARD & HEAVY DUTY PROBES ARE -60°C to +200°C AND FOR FLEXIBLE PROBE IS -60°C to +100°C. IT IS END-USER'S RESPONSIBILITY TO ENSURE THAT AMBIENT TEMPERATURE AROUND THE CAPACITANCE CONTROLLER AND ARJAY PROBE HEAD DOES NOT EXCEED THE PERMITTED AMBIENT OF 55°C.

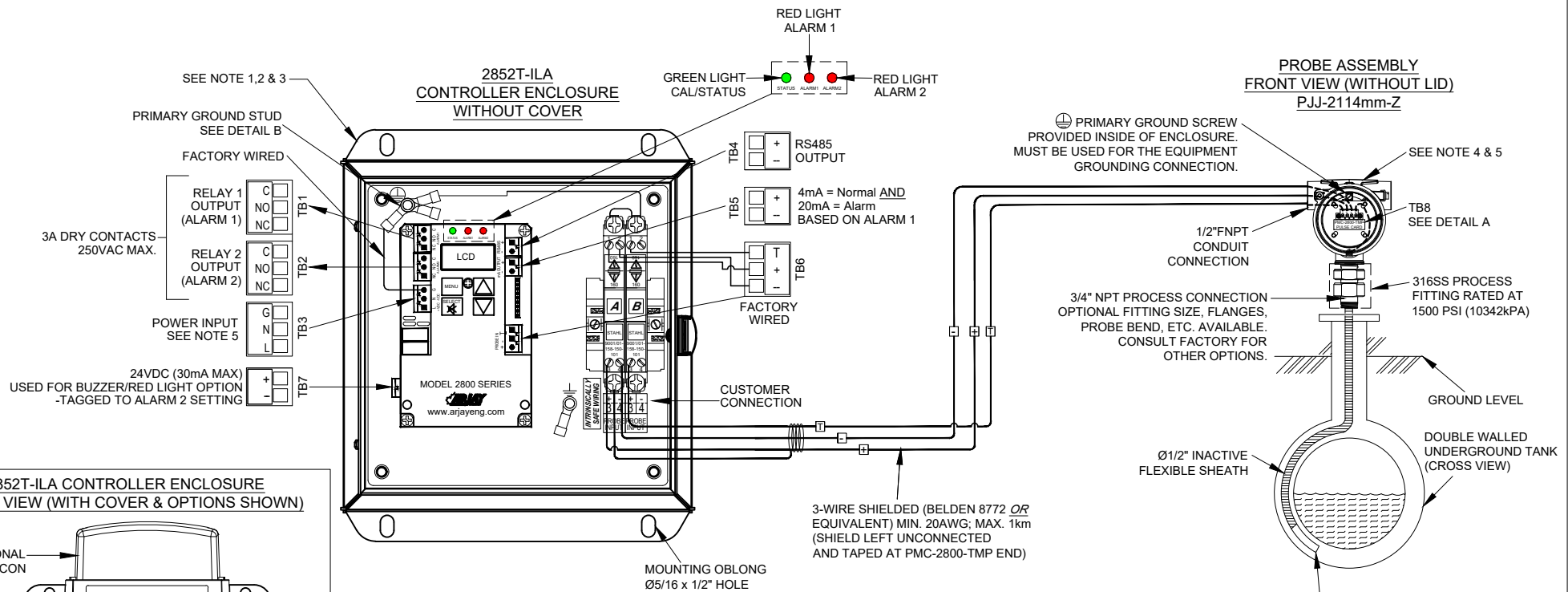
HAZARDOUS LOCATION RATING FOR NORTH AMERICA:

- Ex db IIC T5 Gb
- Class I, Zone 1, AEx db IIC T5 Gb

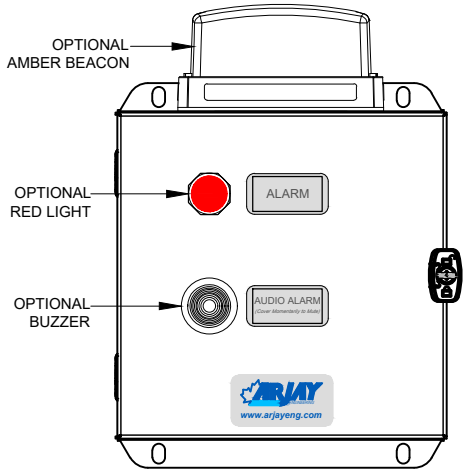
HAZARDOUS LOCATION RATING FOR INTERNATIONAL:

- II 2G Exd T5 Gb
- Sira 17ATEX2261X
- IECEx CSA 17.0019X

REV	DATE	DESCRIPTION	CHKD	APPD
REVISIONS				
PROJECT				
DWG. STATUS		BY	DATE	TITLE
DRAWN		F.H.	28 10 24	2852T-ILA WITH TEMP. COMP. SERIES MAIN CONTROLLER DIMENSION & OVERVIEW DRAWING
CHECKED				
APPROVED				
SCALE	REF. DWGS.	DWG. NO.	PART NO.	SHT. REV.
N.T.S.		20170881		1 0



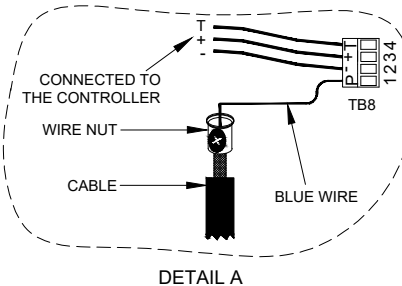
2852T-ILA CONTROLLER ENCLOSURE
FRONT VIEW (WITH COVER & OPTIONS SHOWN)



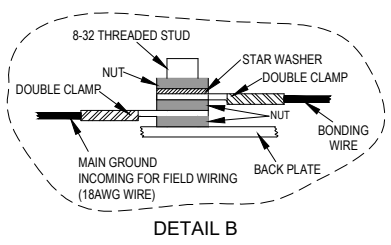
NOT TO SCALE

A. GENERAL COMPENSATION I.S. BARRIER (QTY. 1)
 CSA CERTIFIED SAFETY BARRIER RATED 15.8V MAX.
 ARJAY P/N: A00071
 STAHL P/N: 9001/01-158-150-101 OR EQUAL

B. TEMPERATURE COMPENSATION I.S. BARRIER (QTY. 1)
 CSA CERTIFIED SAFETY BARRIER RATED 15.8V MAX.
 ARJAY P/N: A00071
 STAHL P/N: 9001/01-158-150-101 OR EQUAL



DETAIL A



DETAIL B

GENERAL NOTES:

- DIMENSIONS ARE IN mm [inches].
- TOLERANCE +1mm (0.04 inches).
- CONTROLLER ENCLOSURE (STANDARD):
 - MATERIAL: NEMA 4-12 (IP66) STEEL WITH POLYESTER POWDER BLUE (RAL5015) PAINT.
 - MODEL: EXM 5412 ESCH080804.
 - OUTSIDE DIMENSIONS: 203.2 X 203.2 X 101.6D (8 X 8 X 4D).
 - MOUNTING DIMENSIONS: 222.25 X 152.4 (8.75 x 6).
- CONTROLLER ENCLOSURE (OPTIONAL):
 - MATERIAL: TYPE 4X POLYCARBONATE OPAQUE LIGHT GRAY WITH A GLOSS FINISH.
 - MODEL: INTEGRA ENCLOSURE H8084HLL.
 - OUTSIDE DIMENSIONS: 214 X 214 X 139D (8.44 X 8.44 X 5.47D).
 - MOUNTING DIMENSIONS: 241 X 133 (9.5 x 5.25).
- POWER INPUT:
 - VOLTAGE AS PER ORDER
 - 12VDC or 24VDC or 100-240VAC, 50/60Hz.
 - TERMINALS MARKED (-) (+) ARE FOR DC POWERED UNITS AND L & N FOR AC POWERED UNITS.

CERTIFICATION - CONTROLLER:

ORDINARY LOCATION RATING:
 - UL FILE NUMBER: E343390
 - UL / IEC 61010-1, 2ND EDITION, 2008/10/28
 - CAN/CSA-22.2 NO. 61010-1, 2ND EDITION, 2008/10/01
 - CE: UL / IEC 61010-1; IEC / EN 61000-4; ISO 9001:2008

CERTIFICATION - SENSOR PROBE:

PROCESS TEMPERATURE FOR THE STANDARD & HEAVY DUTY PROBES ARE -60°C to +200°C AND FOR FLEXIBLE PROBE IS -60°C to +100°C. IT IS END-USER'S RESPONSIBILITY TO ENSURE THAT AMBIENT TEMPERATURE AROUND THE CAPACITANCE CONTROLLER AND ARJAY PROBE HEAD DOES NOT EXCEED THE PERMITTED AMBIENT OF 55°C.

INTRINSICALLY SAFE LOCATION RATING FOR NORTH AMERICA & INTERNATIONAL:

- Class I, Division 1, Group A,B,C,D T4;
- Class II, Division 1, Group E,F,G
- Class III, Division 1: Ex ia IIC T4 Ga
- Class I, Zone 0, AEx ia IIC T4 Ga
- Ta: -40°C to +55°C

REV	DATE	DESCRIPTION	CHKD	APPD
REVISIONS				
PROJECT				
ARJAY ENGINEERING				
DWG. STATUS	BY	DATE	TITLE	
	F.H.	28/10/24	2852T-ILA WITH TEMP. COMP. SERIES	
CHECKED	MAIN CONTROLLER WITH FLEXIBLE SHEATHED PROBE AND INTRINSIC SAFETY BARRIER			
APPROVED	DIMENSION & OVERVIEW DRAWING			
SCALE	REF. DWGS.	DWG. NO.	PART NO.	SHT. REV.
N.T.S.		20170880		1 0