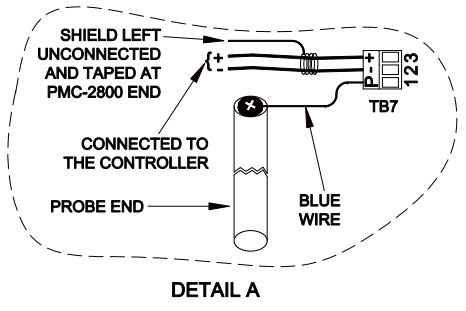
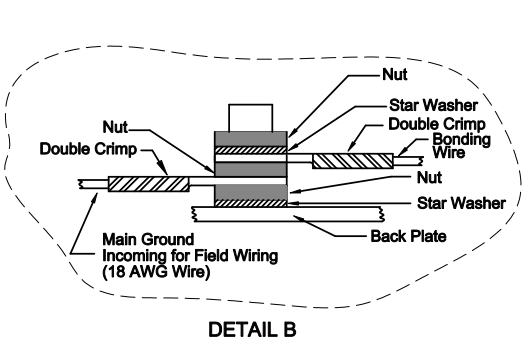
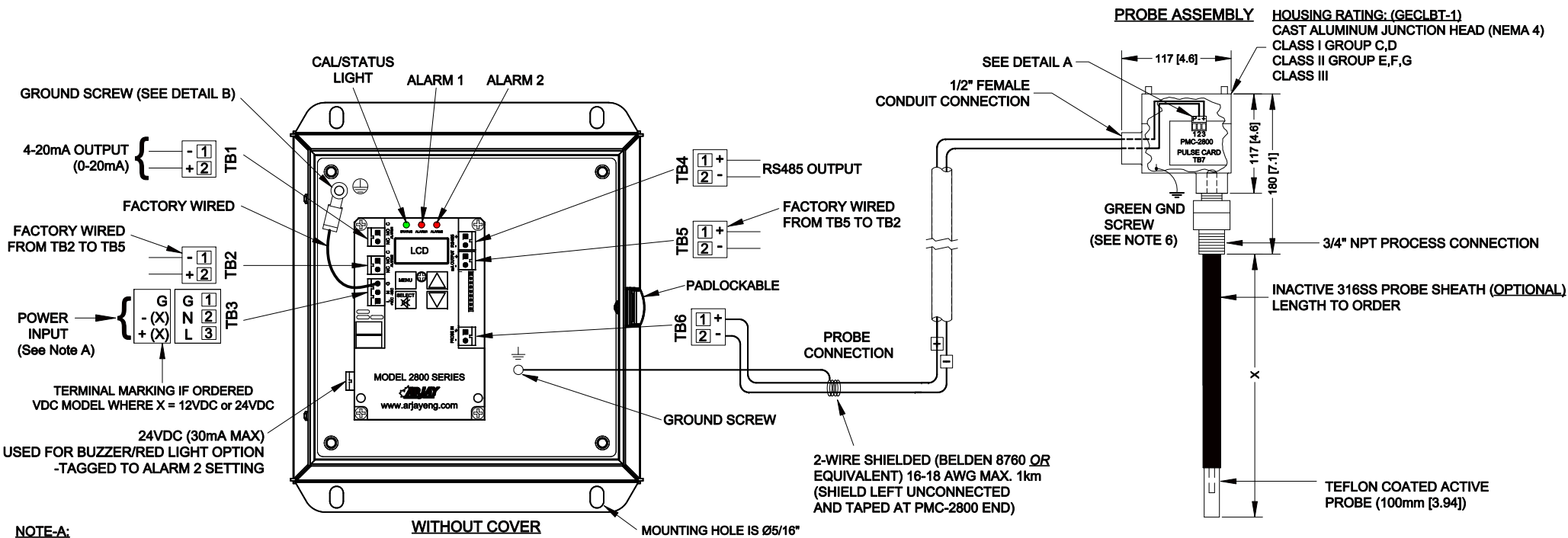


**NOTE-A:**  
 1) INPUT VOLTAGE PER ORDER:  
 12VDC OR 24VDC OR 100VAC-240VAC, 50/60Hz  
 2) TERMINALS MARKED (-) (+) ARE FOR DC POWERED UNITS.

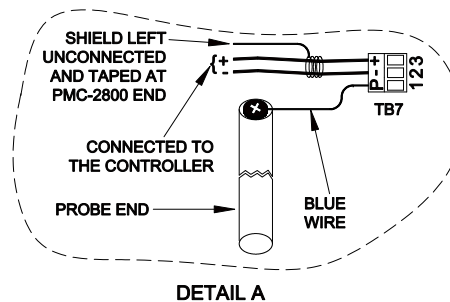
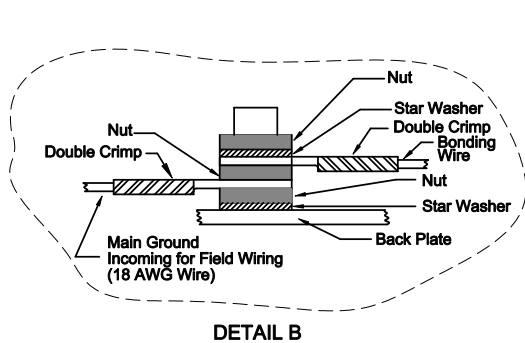


**NOTES:**  
 1) DIMENSIONS ARE IN mm [inches]  
 2) POLYESTER POWDER BLUE (RAL5015) PAINT.  
 3) ENCLOSURE IS A EXM ESCH080804  
 4) ENCLOSURE DIMENSIONS ARE 203.2 X 203.2 X 101.6D (8 X 8 X 4D)  
 5) ENCLOSURE MOUNTING DIMENSIONS ARE 222.25 X 152.4 (8.75 x 6)  
 6) MAKE SURE JUNCTION BOX IS ELECTRICAL GROUNDED VIA TANK (IF GROUNDED OR SEPARATE GND WIRE).  
 7) TYPE 4X POLYCARBONATE ENCLOSURE (OPTIONAL) - MOUNTING FEET DIMENSION 222.25 x 101.6 (8.75 x 4 )

2	02/07/13	REVISED DETAIL A		
1	09/04/12	REVISED NOTE: -TAGGED TO ALARM 2 SETTING		
REV	DATE	DESCRIPTION	CHK'D	APP'D
REVISIONS				
<b>ARJAY ENGINEERING LIMITED</b>			<b>PROJECT:</b> OIL/WATER SEPARATOR LEVEL SWITCH	
DWG. STATUS	BY	DATE	TITLE	
DRAWN	F.H.	04/04/12	2852-OWI DIMENSIONAL & ELECTRICAL DRAWING	
CHECKED				
APPROVED				
SCALE	REF. DWGS.	DWG. NO.	SHT.	REV.
N.T.S.		20100780	1	2



- NOTE-A:**  
 1) INPUT VOLTAGE PER ORDER:  
 12VDC OR 24VDC OR 100VAC-240VAC, 50/60Hz  
 2) TERMINALS MARKED (-) (+) ARE FOR DC POWERED UNITS.



- NOTES:**  
 1) DIMENSIONS ARE IN mm [inches]  
 2) POLYESTER POWDER BLUE (RAL5015) PAINT.  
 3) ENCLOSURE IS A EXM ESCH080804  
 4) ENCLOSURE DIMENSIONS ARE 203.2 X 203.2 X 101.6D (8 X 8 X 4D)  
 5) ENCLOSURE MOUNTING DIMENSIONS ARE 222.25 X 152.4 (8.75 x 6)  
 6) MAKE SURE JUNCTION BOX IS ELECTRICAL GROUNDED VIA TANK (IF GROUNDED OR SEPARATE GND WIRE).  
 7) TYPE 4X POLYCARBONATE ENCLOSURE (OPTIONAL) - MOUNTING FEET DIMENSION 222.25 x 101.6 (8.75 x 4 )

2	02/07/13	REVISED DETAIL A		
1	24/08/12	REVISED NOTE: -TAGGED TO ALARM 2 SETTING		
REV	DATE	DESCRIPTION	CHK'D	APP'D
REVISIONS				
<b>ARJAY ENGINEERING LIMITED</b>			<b>PROJECT:</b> OIL/WATER SEPARATOR LEVEL SWITCH	
DWG. STATUS	BY	DATE	TITLE	
DRAWN	F.H.	04/04/12	2851-OWI DIMENSIONAL & ELECTRICAL DRAWING	
CHECKED				
APPROVED				
SCALE	REF. DWGS.	DWG. NO.	SHT.	REV.
N.T.S.		20100782	1	2